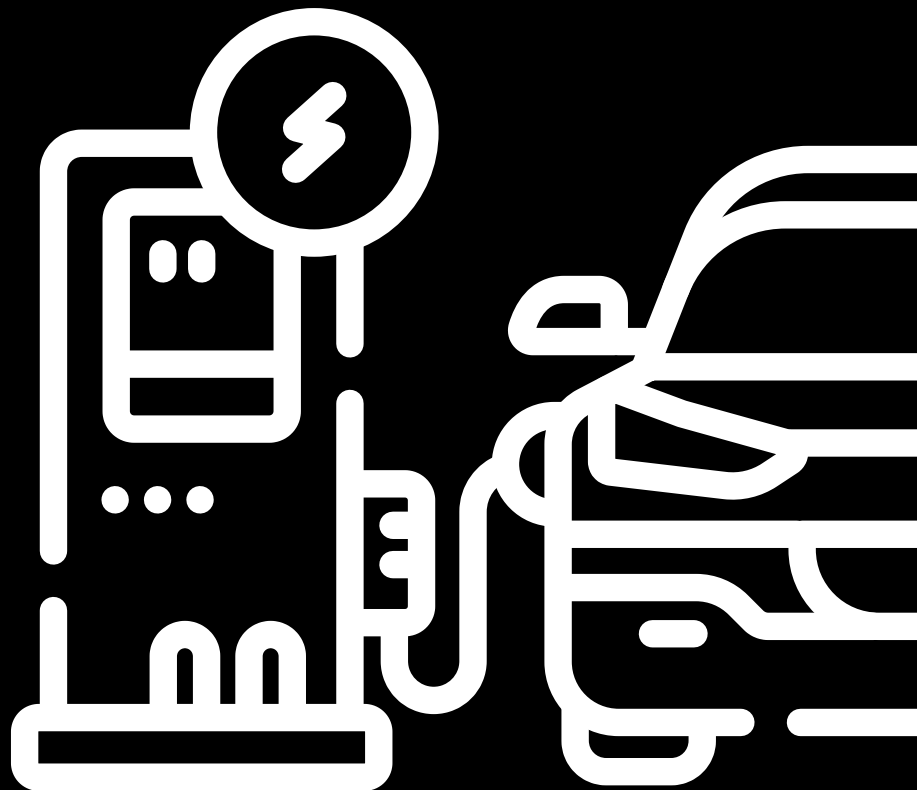


INSIGHT

CHARGING INFRASTRUCTURE ELECTRIC VEHICLES

Expansion of the charging infrastructure
in Berlin Pankow.



SMART INFRASTRUCTURE

Social and technological developments are creating new challenges and opportunities for urban spaces and their infrastructure. With digital means, existing infrastructure is becoming smart infrastructure that can respond flexibly to requirements and is thus more efficient and cost-effective.

In particular, elements of new IT platforms such as IoT (Internet of Things) and AI (artificial intelligence) are being used. They connect sensors and actuators on site, analyze data and optimize the use of infrastructure.

Comprehensive fiber-optic networks and solutions for mobile data traffic are the basis for the development of smart cities. Germany still has a lot of catching up to do here.



siticom supports pilot project in Berlin →

THE CHALLENGE

FLEXIBLE MOBILITY OF EXPANSION RESOURCES

A demand-oriented charging infrastructure is essential for establishing electromobility.

The aim of the project is to create and operate a nationwide charging infrastructure network in which suitable areas for publicly accessible charging stations are marketed to e-mobility providers.

siticom takes over tasks for Comfortcharge GmbH in the area of basic evaluation, planning, realization incl. rollout control. This also includes the management of the partner ecosystem of subcontractors as well as the control of the realization.

PILOT REGION BERLIN - PANKOW DISTRICT

More than 20 charging locations



ROLLOUT GERMANY - COMFORTCHARGE GMBH

- Subsidiary of Deutsche Telekom AG
- Use of the group's own telecommunications network
- Nationwide installation of multifunctional housing locations for charging parking areas
- Further planned rollouts in parking garages, on private sites and company sites



OUR SERVICES IN DETAIL



PLANNING

- Clarification of electrotechnical and constructional requirements for the connection of the charging columns
- Selection of suitable specialist companies for the realization of the electrical work, civil engineering and surface work
- Economic feasibility studies
- Rollout planning/ Resource planning
- Application to the authorities
- Planning documentation

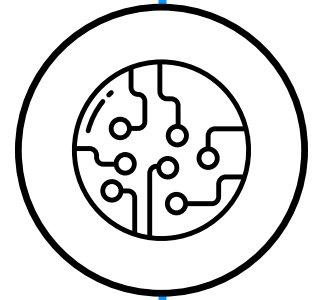
STRUCTURAL INSPECTION

- Appointment coordination
- On-site inspection
- Comparison of the preliminary planning with the local conditions
- Logging of the agreements incl. picture documentation



SUBCONTRACTOR MANAGEMENT AND REALIZATION CONTROL

- Sustainable further development of established partner networks, taking into account region-specific requirements
- Quality management
- Project management of the overall implementation
- Schedule coordination / rollout planning
- Problem management



BID MANAGEMENT

- Site-related definition of requirements
- Allocation of the trades
- Execution of the inquiries
- Evaluation of the offers
- Negotiation of conditions
- Preparation of turn-key offers for the realization of the locations

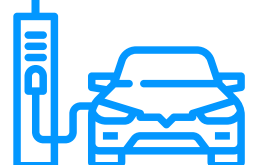
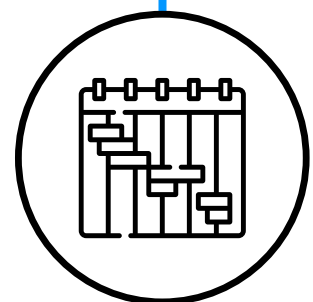


CONSTRUCTION PROJECT HANDLING

- Coordination and supervision of construction for electrical installation, civil engineering and surface work
- Ensuring proper completion of all outside services and compliance with all standards and regulations
- Examination of planning deviations from as-built plans
- Acceptance, checking of dimensions, preparation of accounting documents

PROJECT MANAGEMENT AND CONTROLLING

- Management of all planning and construction-related work packages
- Control of planning resources at various locations
- Control of subcontractors
- Interface to the customer, regular meetings, reporting and escalation management



CONTACT US

BRUNO HEESEN

DIRECTOR INFRASTRUCTURE SERVICES



+49 15117488085



info@siticom.de



siticom.online

ABOUT SITICOM

siticom is a technology innovation company founded in 2010 with a focus on the digital transformation of infrastructure and networks of tomorrow. siticom's portfolio is geared towards the complex technological challenges of the future. The solutions and services range from technical and strategic advice to engineering services for planning and realizing network infrastructures in communication networks and corporate networks. Thanks to a highly innovative, flexible grid of system partners, siticom is able to implement high-quality solutions at short notice. The combination of consulting, design and architecture bundled with the assumption of system and implementation responsibility as well as test-automation distinguishes siticom as an independent system integrator.